

1866 CO₂ RIFLED BARREL KIT USER MANUAL*

CONTENTS:*

- 1 Rifled barrel
- 1 Force Cone Caliber Adapter
- 10 Pellet Cartridges

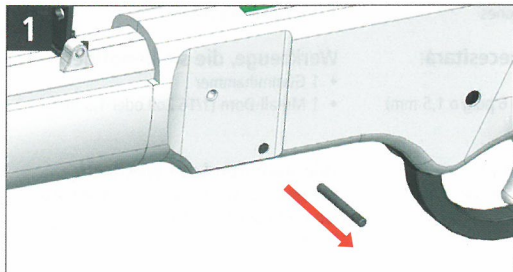
TOOLS YOU WILL NEED:*

- 1 Rubber Mallet
- 1 Metal Pin Punch (1/16 in or 1.5 mm)

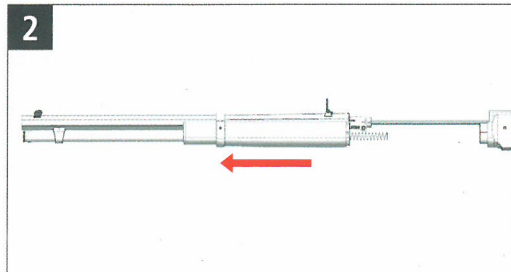


HOW TO CHANGE BARREL*

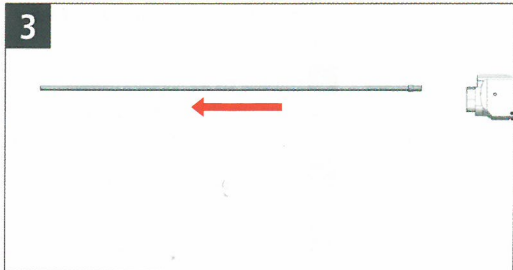
Remove any CO₂ and ammunition from the gun before starting this process.



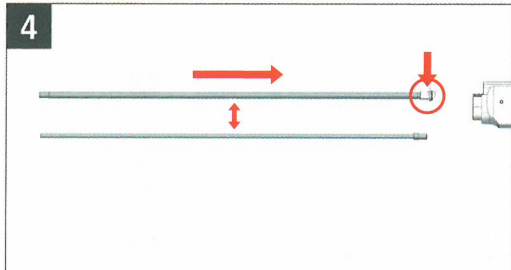
Remove the receiver pin with a punch and mallet from right to left. Take care not to damage the surface of the receiver. Receiver damage is not covered by warranty.*



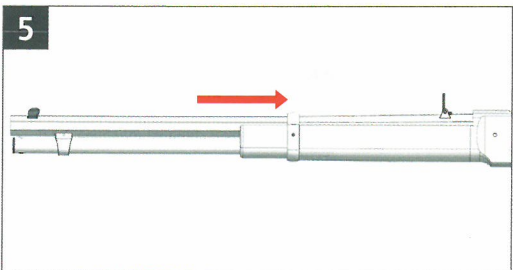
Slide the entire front barrel assembly off to separate it from the receiver.*



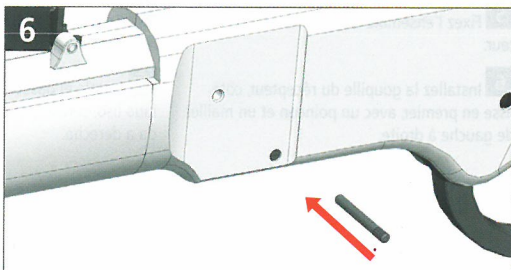
Remove the inner barrel from the receiver.*



Attach the caliber adapter to the inner barrel you are preparing to install. Insert the inner barrel with installed caliber adapter into the front barrel assembly.*



Attach the front barrel assembly to the receiver.*



Install the receiver pin, smooth side first, with a punch and mallet from left to right.*