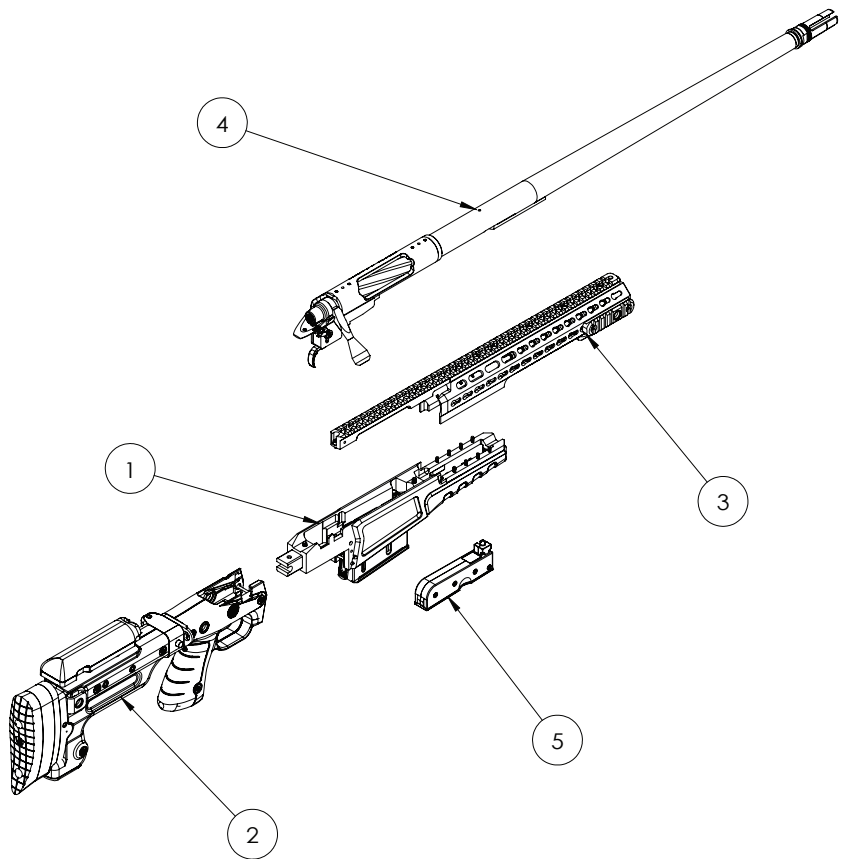
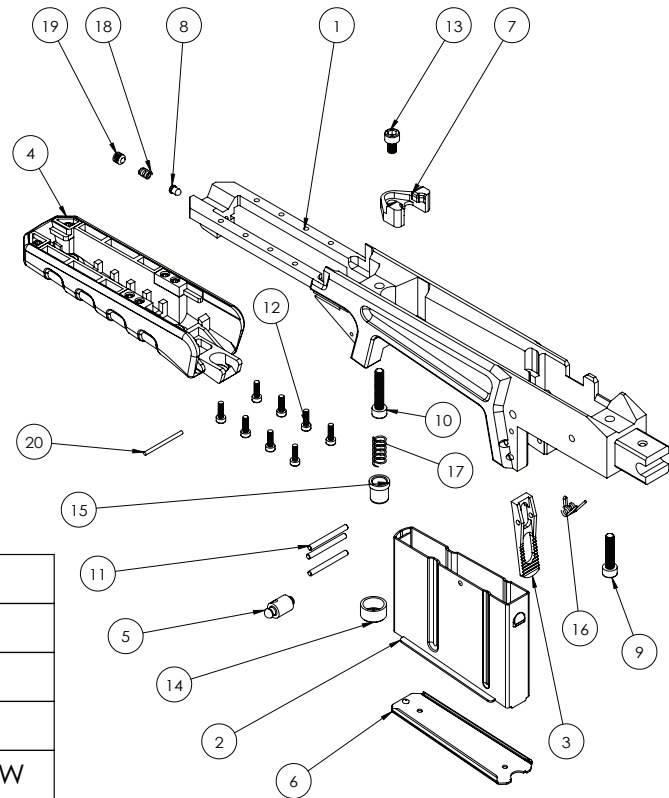


MODULES



1	LOWER RECEIVER
2	STOCK
3	FOREGRIP
4	UPPER RECEIVER
5	MAGAZINE

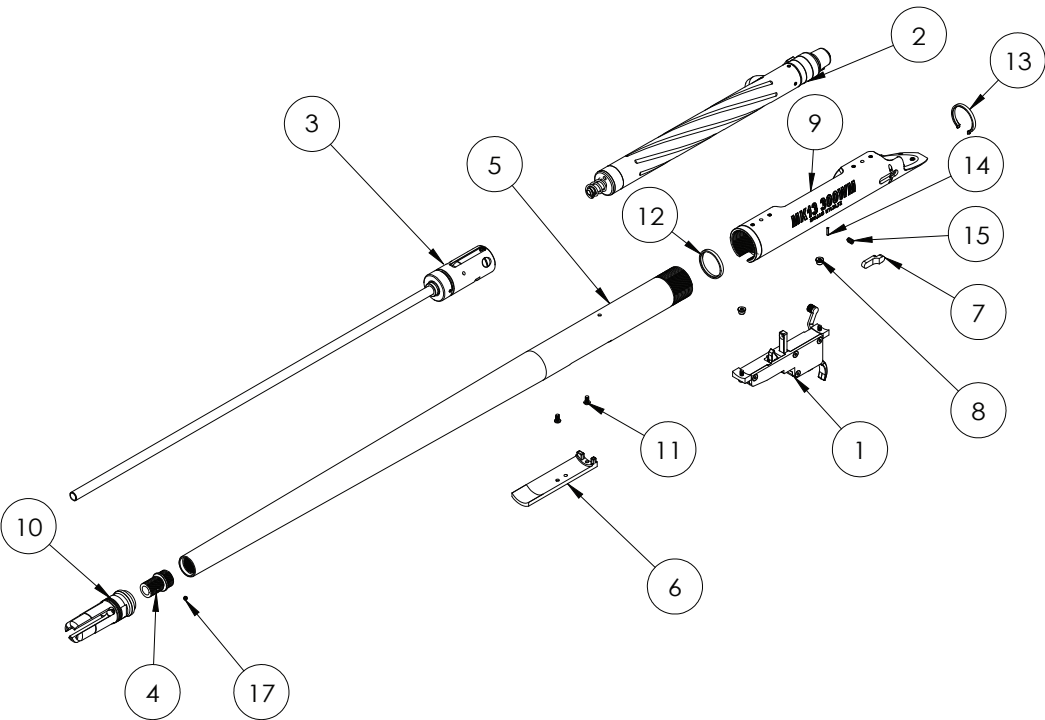
LOWER RECEIVER



1	LOWER RECEIVER		
2	FALSE MAGAZINE		
3	F.M. RELEASE		
4	FOREGRIP		
5	STOCK LATCH		
6	F.M. FLOOR PLATE		
7	F.M. MAG CATCH		
8	MAG. RETAINER		
9	M5x22 HEX SCREW	15	HGP BUTTON
10	M5x26 HEX SCREW	16	F.M.R. SPRING
11	3x30 SS CROSS PIN	17	8x0.8 SPRING
12	M3x10 HEX SCREW	18	4.8x0.4 SPRING
13	M5x8 HEX SCREW	19	M5x6 HEX SET SCREW
14	HG POSITION SEAT	20	2x30 SS CROSS PIN

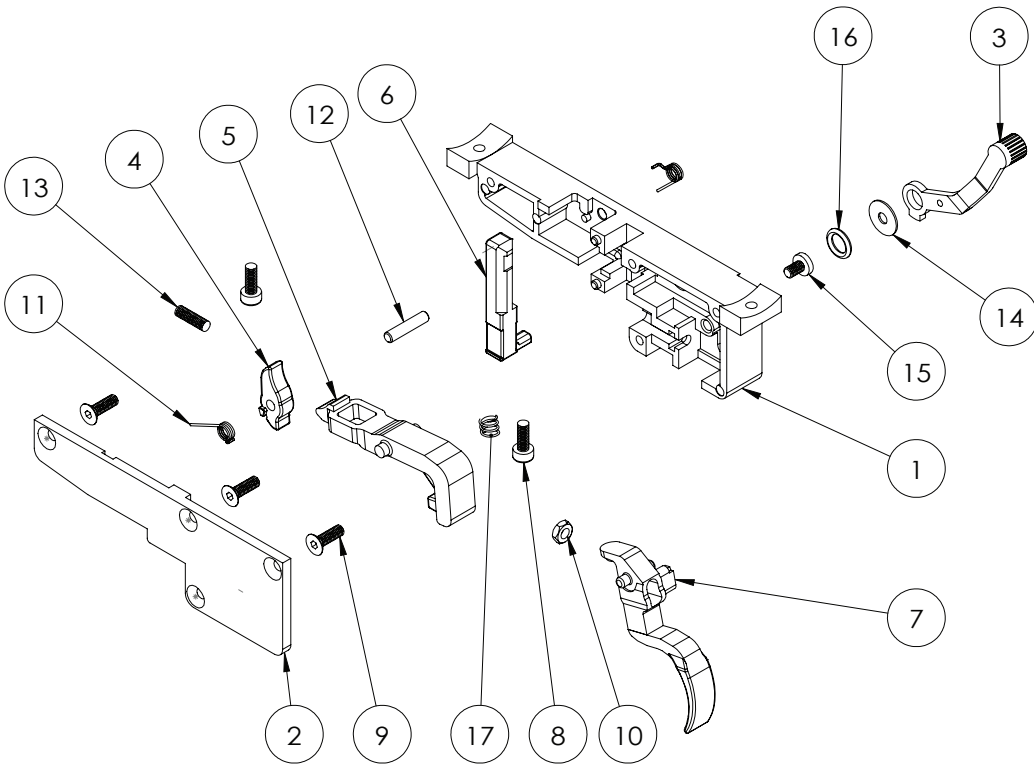
UPPER RECEIVER

1	TRIGGER BOX
2	BOLT ASSEMBLY
3	HOP-UP CHAMBER
4	BARREL TIP
5	OUTER BARREL
6	BARREL HOLDER
7	BOLT BUTTON
8	TRIG.BOX.NUT
9	ACTION
10	MUZZLE DEVICE
11	M3x6 HEX SCREW
12	ACTION FRT. BUSHING
13	ACTION R. BUSHING
14	1.5x8 SPRING PIN
15	4x0.5 SPRING
16	M3x4 HEX SCREW
17	M2x6 HEX SET SCREW

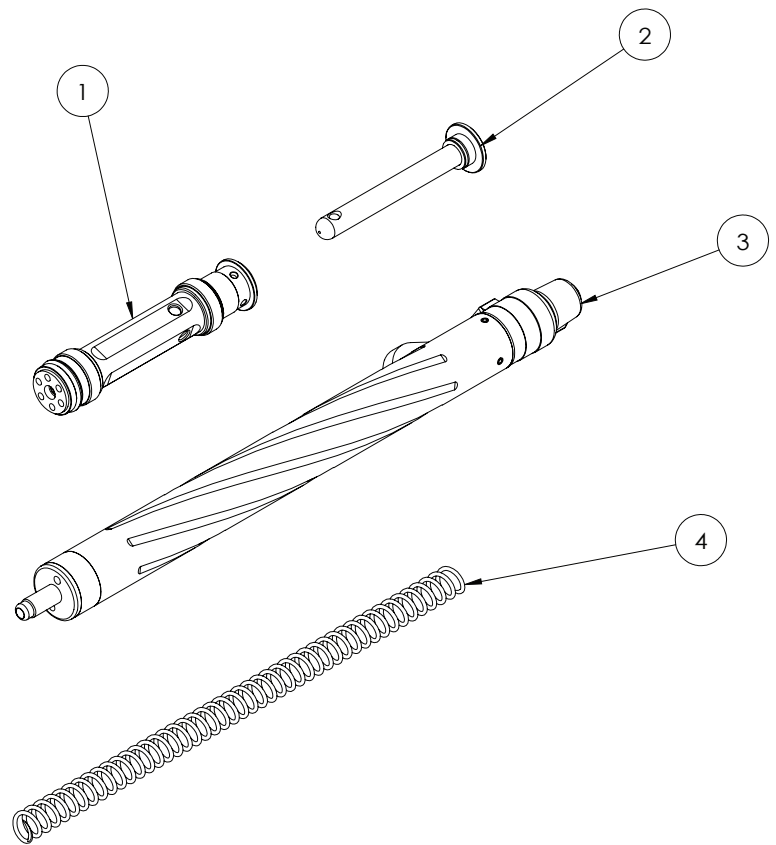


TRIGGER BOX

1	T.B. HOUSING
2	T.U. COVER
3	SAFETY LATCH
4	90° PISTON SEAR
5	TRIGGER LEVER
6	S.G. STOPPER
7	TRIGGER
8	M3x8 HEX SCREW
9	M3x 8 F.H. HEX SCREW
10	M3 THIN NUT
11	SEAR SPRING
12	3x15 SS ROLL PIN
13	M3x10 HEX SET SCREW
14	M3 WASHER
15	M3x5 F.H. HEX SCREW
16	8.5x1.5 O-RING
17	5x0.5 SPRING

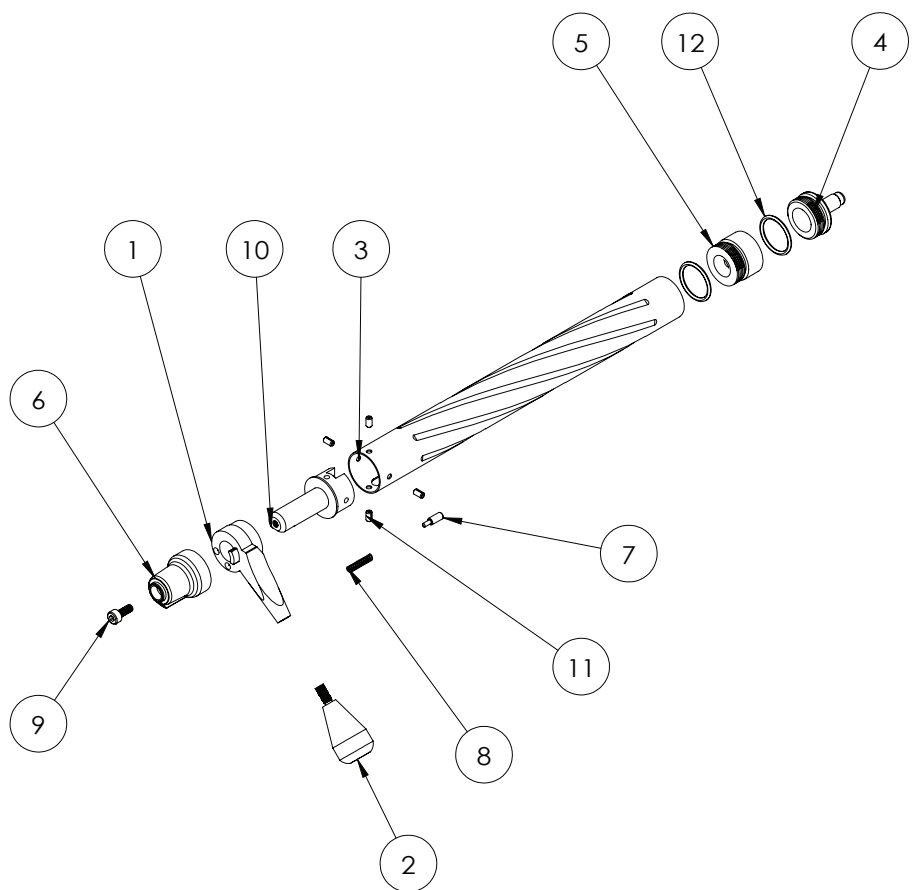


BOLT



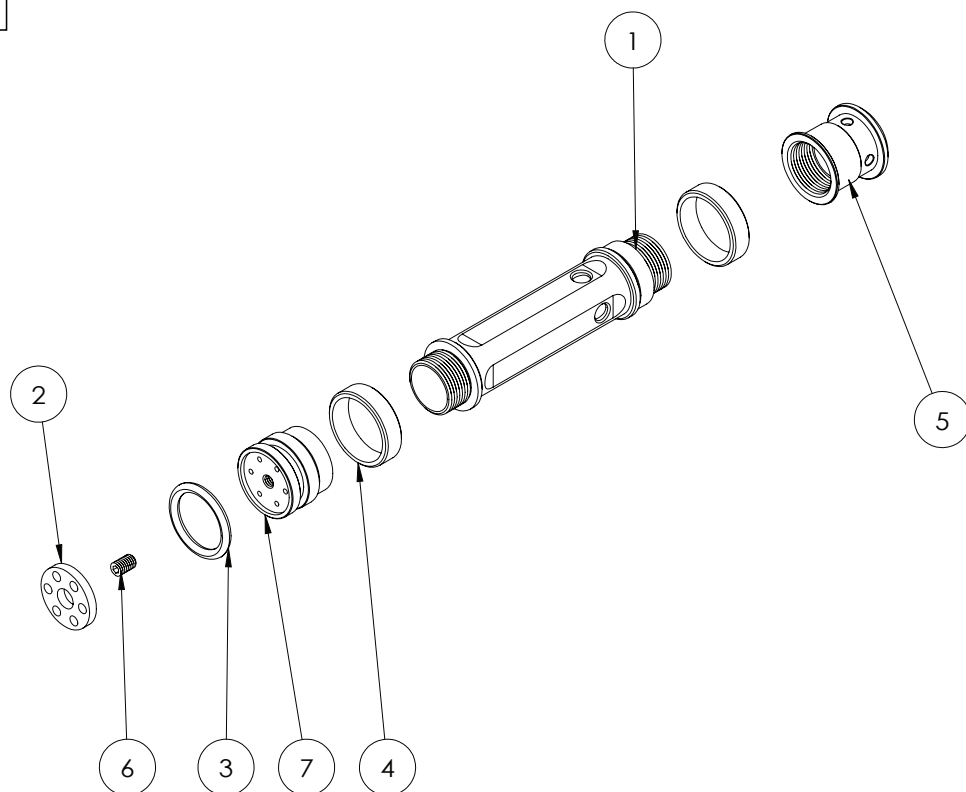
1	PISTON
2	SPRING GUIDE
3	BOLT BODY
4	POWER SPRING

CYLINDER SET



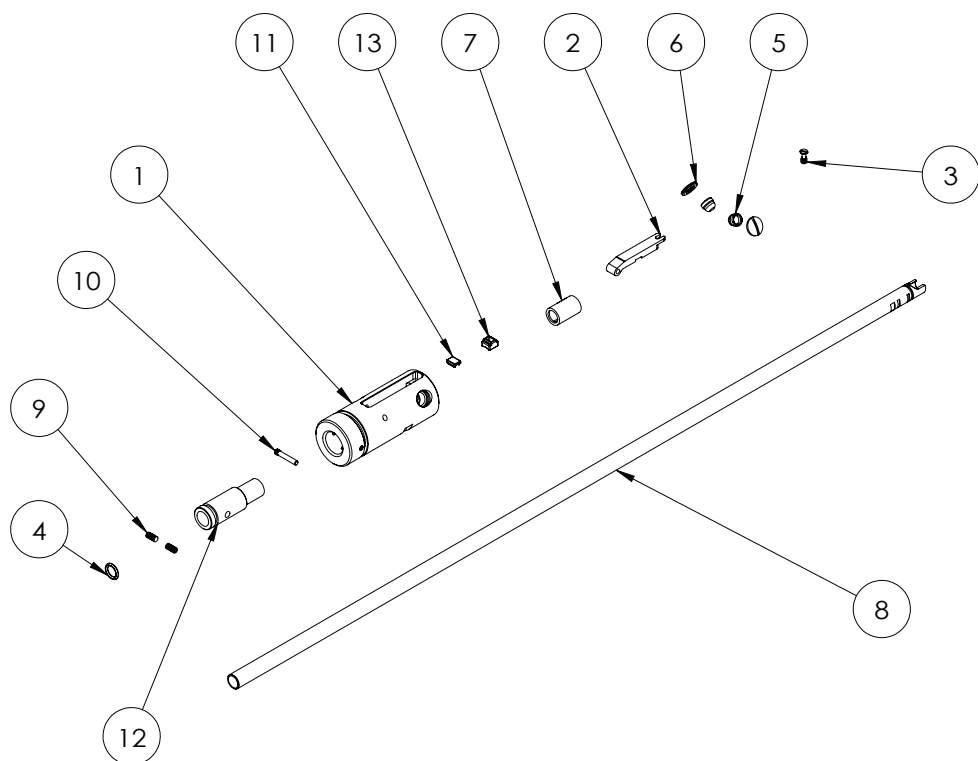
1	BOLT HANDLE
2	BOLT HANDLE HEAD
3	CYLINDER BODY
4	PISTON HEAD
5	P.H. EXTENDER
6	BOLT PLUG
7	BOLT PLUG PIN
8	BOLT PLUG SPRING
9	M4x10 HEX SCREW
10	CYLINDER BACK TUBE
11	3x6 SPRING PIN
12	2x9 O-RING

## PISTON



1	PISTON BODY
2	PISTON RUBBER
3	PISTON O-RING
4	CENTERING RING
5	90° PISTON END
6	M4x5 HEX SET SCREW
7	PISTON HEAD

## HOP-UP CHAMBER



1	CHAMBER BODY
2	HOP-UP LEVER
3	TOP ADJUSTER
4	CHAMBER SLEEVE O-RING
5	BB HOLDER
6	BB HOLDER SCREW
7	HOP-UP BUCKING
8	INNER BARREL
9	M3x6 HEX SET SCREW
10	2x15 ROLL PIN
11	HOP-UP LEVER PLATE
12	CHAMBER SLEEVE
13	HOP-UP LEVER PLATE 2