

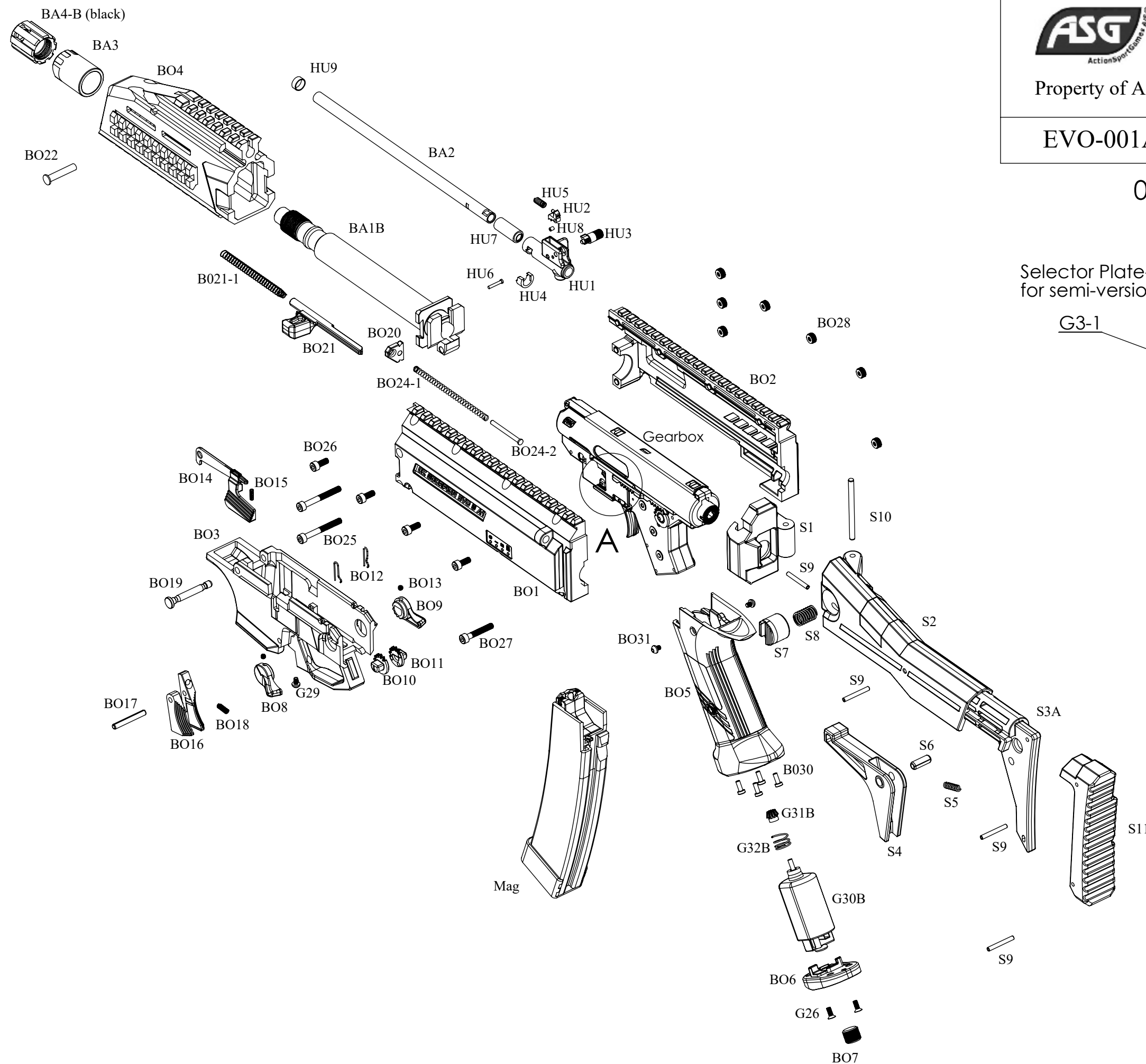


Rev.0 / Date: 24-02-2023

Property of ActionSportGames / ASG

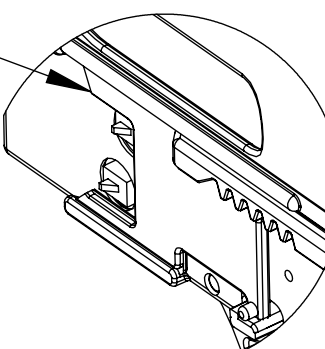
EVO-001A-semi

001A-Boost-semi



Selector Plate-L
for semi-version

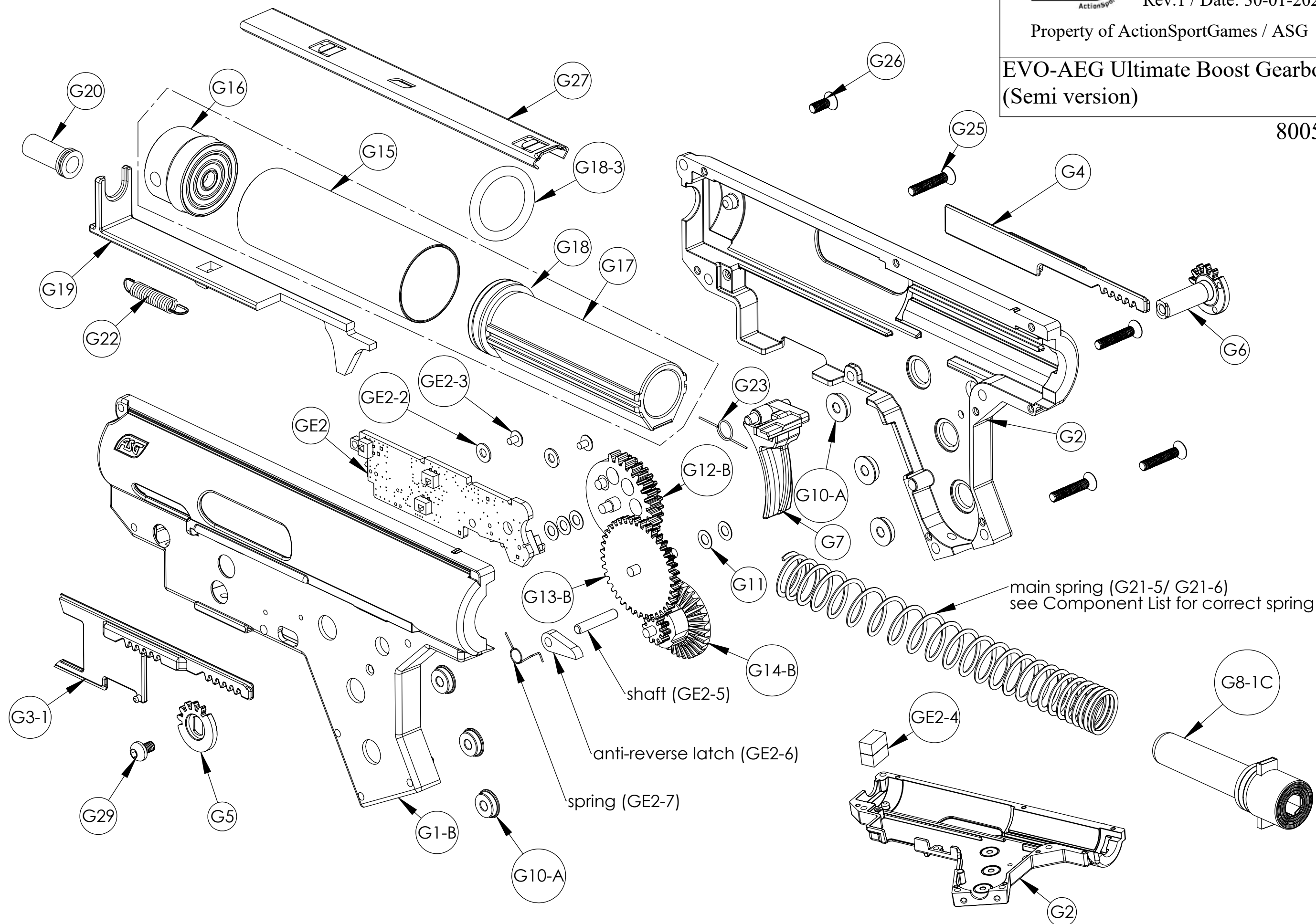
G3-1



DETAIL A

EVO-AEG Ultimate Boost Gearbox (Semi version)

80056



| Drawing no. | order no. | Description | * |
|-------------|-----------|---------------------------------|---|
| BA1B | 17739 | Outer Barrel | |
| BA2 | 17740 | Inner Barrel - 208mm | * |
| | | | |
| BA3 | 17741 | Barrel Nut | |
| BA4-B | 17742 | Flash Hider | |
| | | | |
| | | | |
| | | | |
| | | | |
| | | | |
| BO1 | 17752 | Upper Receiver - L | |
| BO10 | 17761 | Selector Gear - L | |
| BO11 | 17762 | Selector Gear - R | |
| BO12 | 17763 | Selector Spring | |
| BO13 | 17764 | Set screw M3x4 DIN916 | |
| BO14 | 17765 | Bolt Catch Lever | |
| BO15 | 17747 | Hop-Up Push-Spring | |
| BO16 | 17766 | Mag Release | |
| BO17 | 17767 | Mag Release Pin ø3,5x30 | |
| BO18 | 17768 | Mag Release Spring | |
| BO19 | 17769 | Disassembly Pin | |
| BO2 | 18098 | Upper Receiver - R | |
| BO20 | 17770 | Sling hook, Scorpion EVO 3 - A1 | |
| BO21 | 17771 | Charging Handle | |
| BO21-1 | 17772 | Charging H-Spring | |
| BO22 | 17773 | Charging handle pin | |
| BO23 | 17774 | Dummy Bolt | |
| BO24-1 | 17775 | Dummy bolt spring | |
| BO24-2 | 17776 | Dummy spring guide | |
| BO25 | 17777 | Bolt M4x35 DIN912 | |
| BO26 | 17778 | Bolt M4x12 DIN912 | |
| BO27 | 17779 | Bolt M4x25 DIN912 | |
| BO28 | 17780 | Nut M4x4 | |
| BO3 | 17754 | Lower Receiver | |
| BO30 | 17781 | Bolt M3x6 ISO7380-1 | |
| BO31 | 18578 | Bolt M3x6,8 mm | |
| BO4 | 17755 | Hand Guard - front set | |
| | | | |
| BO5 | 17756 | Grip | |
| BO6 | 17757 | Grip Cap | |
| BO7 | 17758 | Motor Adjusting Bolt | x |
| BO8 | 17759 | Selector Lever - L | |
| BO9 | 17760 | Selector Lever - R | |

| Drawing no. | order no. | Description | * |
|----------------|-----------|--|---|
| | | | |
| G1-B | 70156 | Gearbox Shell - Left | |
| G2 | 19231 | Gearbox Shell - Right | |
| G3-1 | 70177 | Selector Plate - L (semi) | |
| G4 | 17707 | Selector Plate - R | |
| G5 | 17708 | Transfer gear - L | x |
| G6 | 17709 | Transfer gear - R | |
| G7 | 17710 | Trigger | |
| G8-1C | 18158 | Spring guide - with axial bearing | |
| G10-A | 17714 | Oilless Bushing 8 mm | * |
| G11 | 17715 | Shims 3x6x0,5 mm | * |
| G11 | 18048 | Shims 3x6x0,3 mm | * |
| G11 | 70241 | Shims 3x6x0,2 mm | * |
| G12-B | 70158 | Gear - Sector - Boost | * |
| G13-B | 70159 | Gear - Spur - Boost | * |
| G14-B | 70160 | Gear - Bevel - Boost | * |
| GCA | 19221 | Cylinder/piston unit (G15 to G18) | * |
| G15 | | Cylinder | |
| G16 | | Cylinder head | |
| G17 | | Piston | |
| G18 | | Piston head with O-ring | |
| G18-3 | 70242 | O-ring (can be ordered as replacement) | |
| G19 | 17723 | Tappet Plate V3 | |
| G20 | 17724 | Nozzle | |
| G21-6 | 18744 | Main Spring M115 (yellow) | * |
| | | | |
| G22 | 17727 | Tappet Spring | |
| G23 | 17728 | Trigger Spring | |
| G25 | 17730 | Bolt M3x16 DIN7991 | |
| G26 | 17731 | Bolt M3x8 DIN7991 | |
| G27 | 19354 | Gearbox Plate | |
| G29 | 17734 | Bolt M3x5 ISO7380-1 | |
| G30B,G31B,G32B | 70161 | motor Boost - short axle | |
| GE2 | 70152 | EC Unit - for EVO Boost and CNC | |
| GE2-2 | | Plastic washer for M2 screw | |
| GE2-3 | | Bolt M2x3 (round head ø4,3 mm) | |
| GE2-4 | | Rubber | |
| GE2-5 | | Shaft | |
| GE2-6 | | Anti-reverse latch | |
| GE2-7 | | Spring | |
| HU1 | 17743 | Hop-Up Chamber | |
| HU2 | 17744 | Hop-Up Lever | |
| HU3 | 17745 | Hop-Up Roler | |
| HU4 | 17746 | Hop-Up C-Clip | |

| Drawing no. | order no. | Description | * |
|-------------|-----------|--------------------------|---|
| HU5 | 17747 | Hop-Up Push-Spring | |
| HU6 | 17748 | Hop-Up Pin | |
| HU7 | 17749 | Hop-Up Rubber | * |
| HU8 | 17750 | Hop-Up Roll | * |
| HU9 | 17751 | Hop-Up Ring | |
| M1 | 17792 | Magazin Body - Black | |
| M10 | 17802 | Magazine Spring Support | |
| M11 | 17803 | Bottom Cap | |
| M12 | 17804 | Pin ø2x21 | |
| M2 | 17793 | Magazine Shell - L | |
| M3 | 17794 | Magazine Shell - R | |
| M4-1 | 17795 | Follower 1 | |
| M4-2 | 17796 | Follower 2 | |
| M5 | 17797 | Status Lever 1 | |
| M6 | 17798 | Status Lever 2 | |
| M7 | 17799 | BB Jaw | |
| M8 | 17800 | Jaw Spring | |
| M9 | 17801 | Magazine Spring | |
| S1 | 17782 | Stock Base | |
| S10 | 17791 | Pin ø4x54 | |
| S11 | 18327 | Stock Shoulder | |
| S2 | 18323 | Stock Body | |
| S3A | 18324 | Stock Extender | |
| S4 | 18325 | Stock Release Lever | |
| S5 | 17786 | Stock Lock. Lever Spring | |
| S6 | 17787 | Locking Button Pin ø6x16 | |
| S7 | 18326 | Stock Button | |
| S8 | 17789 | Locking Button Spring | |
| S9 | 17790 | Pin ø3x24 | |

19780 Ultimate Boost-semi (colour: Black)

EVO-A1 AEG